

MICROSOFT 365 ENDPOINT MANAGER: INTUNE, AZURE and MIGRATION.

Microsoft 365, Intune and Azure.



Remote working is certainly here to stay.

This has been a rising trend over the last few years, especially with the increased use of BYOD (Bring Your Own Device). However, employees using their own devices at work and at home can also lead to some serious security concerns.

Here we discuss the many benefits of Intune and how it provides the ultimate remote working experience.

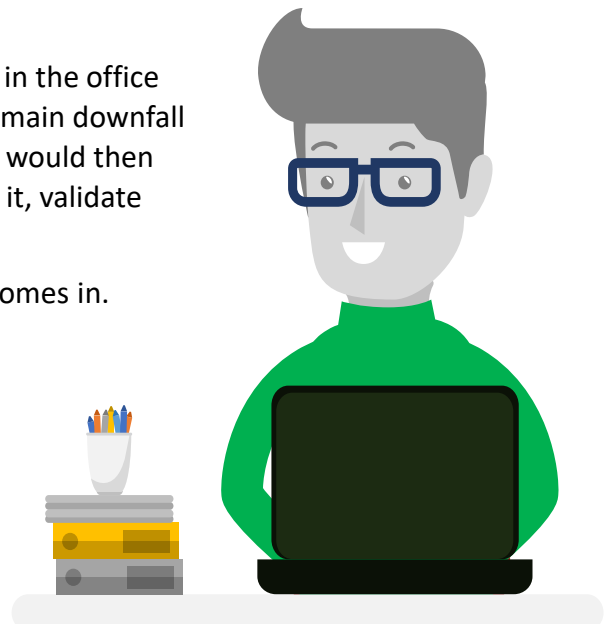
Microsoft 365, a move away from the office server.

Microsoft have been increasing their 'cloud networking' ability for many years. It has recently come of age in its ability to provide a truly secure network, regardless of the location of the device.

In a traditional situation, you would have a server located in the office would control devices and lock them down securely. The main downfall of this system comes when the device leaves the office. It would then require a constant VPN connection to securely connect to it, validate the user or share company information.

This is where the recently renamed 'Microsoft 365' suite comes in. It encompasses 4 key elements:

- **Office** – the traditional suite of office software; Outlook, Word, Excel, etc
- **Hosted Exchange** – Email in the cloud, backed up and archived
- **Intune** – Cloud device management – MDM and MAM
- **Azure AD** – Company personnel and rights management



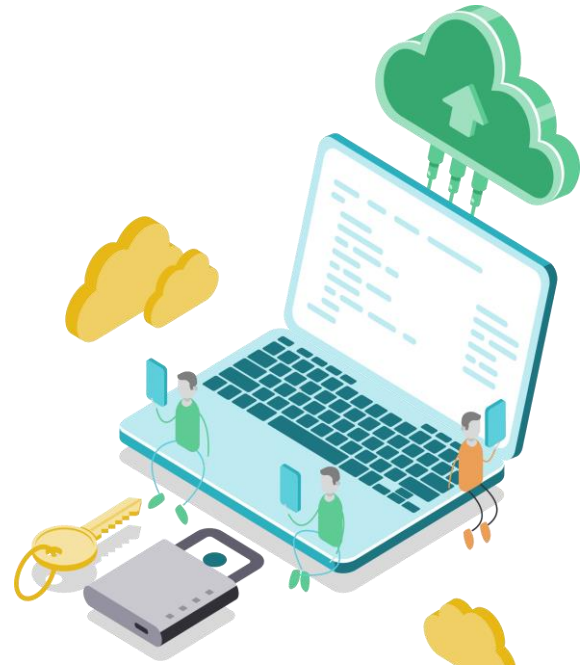
Microsoft 365, Intune and Azure AD.

Intune – what is it?

Intune keeps employees productive from anywhere, while keeping company data secure and protected.

Essentially, it is a cloud-based management solution for all devices accessing company data, including desktops and mobiles, on-premises or remote. It makes company data accessible for employees wherever they are, while maintaining full control and security.

As it is cloud based, it's quick, scalable, and affordable.



The benefits of MDM and MAM

MDM (Mobile Device Management) and MAM (Mobile Application Management) are easily installed apps for personal devices. They also provide the ability to lock down any mobile device. This includes mobile phones, laptops, iPads at home, iPads or any other devices used to access company data online. It is especially helpful when that device is not connected to the local network in the office.

Specific examples of data protection:

- a user can't take a picture or screenshot of company data using their Android phone
- if the device is in an irregular location (for example in a different country), there will be a new level of authentication for data access.
- data can only be cut, copied, and pasted between management applications
- users can only 'save as' documents to secure locations.

At the same time, data cannot be shared between work and personal profiles. Intune's pre-built policies insure that employees personal data cannot be viewed by the company and their location cannot be tracked.

Jamf Pro – for Mac Devices

Out of the box, Intune and Azure only work with Windows devices, of course! However, if there are individuals in the organisation that use Macs, they can utilise an add-on called Jamf Pro. This provides the same level of granular control with the Macs as they would have with PC's.

Azure Active Directory

With Intune MDM and MAM you can specify EXACTLY which device can access company data, and even which APPLICATION. Your selections link directly to the Azure Active Directory. This directory provides a policy of what access levels users should have. It also identifies the list of users and associated access right

Microsoft 365, Intune and Azure AD.

The 3 key benefits of Intune

1 Secure Access

You can define exactly what PC's, Laptops or phones are registered to access company data at any point. This can be viewed as a global report or per user. No additional anti-virus software is required.

Data and permissions can be restricted based on:

- the level of employee access
- compatibility of device
- Location
- the risk level



2 100% Cloud



All the User information can be changed in one place and will affect every device that each user is registered on.

For example, with **just one click** you can disable the following access for a user:

- logging on at home to access company files and folders via Teams
- access to the office PC for email and data
- access on their phone for email and Teams.

In addition, the remote management makes it easier and more effective to fix any issues that arise, saving on time and admin costs.

Documents can be worked on collaboratively both with colleagues and third parties, and video meetings can be easily organised. **Alongside VPN, Intune provides the complete remote working experience.**

3 A Blueprint for Security for Cyber Essentials and ISO27001.

This is the way forward for obtaining the government Cyber Essentials Certification or even ISO27001. It is easier to obtain when you already use a highly secure infrastructure, with restricted access to certain devices or applications per user. It also helps you prove that you always know where your data is being held.



Migrating to Microsoft Office 365.

Benefits

Migrating to MS365 offers many key benefits such as:

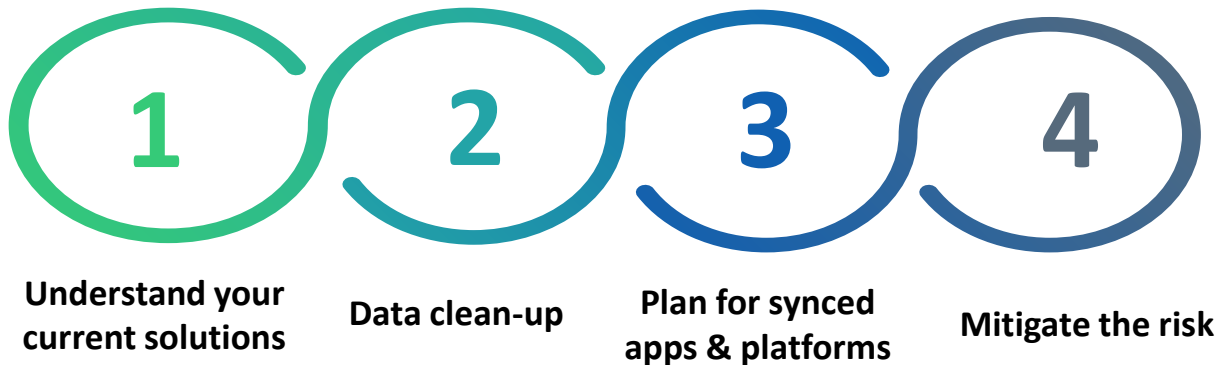
- **Flexibility** as it's hosted in the cloud, users only need an internet connection to access files, emails and programmes
- **Lower upfront costs**; the pricing works like a subscription. So, managing the spend is easy and transparent, as well as being agile
- **Simpler licensing** for multiple computers and products. You specify the number of licenses that you need, based on how many people you have in your organisation. As your organisational needs change, you can reassign existing licenses or buy more.

And the cons?

As with most modern products, it is designed to be easy. However, there are potential pitfalls and a few places where it is easy to trip up. That's where it's always a good idea to hire an expert experienced in ensuring a smooth transition.

Planning for a migration

Here is where No Problem IT can help in order to plan for a smooth and successful transition.



1. Understand your current solutions

To ensure a seamless transition, we carry out a thorough audit of your current setup to understand exactly what needs to be migrated. This means having a good understanding of your current email solutions, including platforms, user locations and devices. Broken down, this means knowing:

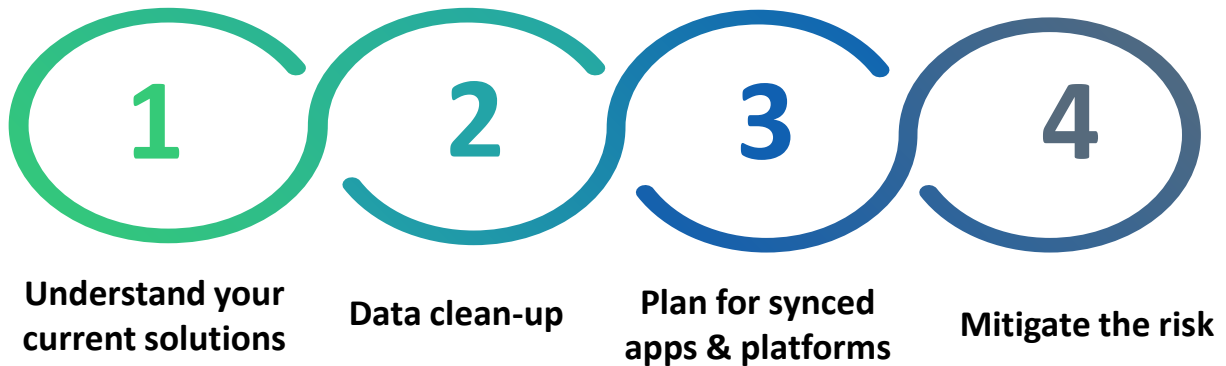
- How many mailboxes you want to migrate
- If users are across multiple locations
- If users are under different email domains
- If users are using different devices

2. Data clean-up

It is important to use your migration plan as an opportunity to archive outdated data and ensure everything is and remains GDPR compliant. We offer support and advice with what to migrate and what to retain in your archives. And you won't need to worry about the unnecessary or outdated data; we will manage and migrate this elsewhere.



Planning for a migration (cont.)



3. Plan for synced apps and platforms

A 365 migration isn't solely based around email, calendars and tasks. Chances are you have countless other apps synced with your email, from your email marketing platform to your CRM, as well as devices like printers and scanners. We plan for these, cataloguing them during our initial audit and ensuring they are part of your personalised migration strategy.

4. Mitigate the risk

As with any kind of switchover, there is risk associated with a migration of this kind. This isn't something that should stop you undertaking a transition; as long as you mitigate the risks involved, your migration should be fast and minimally disruptive.

The first step in mitigating risk is ensuring your spam and malware solutions are installed and current. The second step is undertaking a full audit of all the data migrated and archived. A thorough review of these risks by experts in the sector will give you peace of mind. No Problem IT prides ourselves on our diligence in ensuring that your migration is safe, secure and simple, thanks to our expertise and experience in these full migrations.

365 Migration Services

No Problem IT are experts in fast migrations with minimal disruption to you and your organisation. This includes mailbox data; emails, contacts, calendars, and tasks.

- ✓ We provide full planning and support, based on your unique business requirements and GDPR compliance.
- ✓ We can migrate mailboxes from Exchange Server or migrate email from other IMAP-enabled email systems such as Enterprise Vault, EmailXtender, SourceOne, Quest and more.
- ✓ We maintain best practices for Exchange Online for the ultimate performance.

Read here about our [Microsoft 365 migration services](#) or [contact us](#) to begin your Microsoft 365 migration.



From maintaining your IT Infrastructure to helping you transition to the Cloud, we are experts in a range of IT Support services.

Simple. Secure. Sorted.